

A watercolor-style illustration of a winding green path that curves across the page. Several trees of varying sizes are scattered along the path, with the largest tree on the right side. The background is a soft, light green wash.

GROWING GENEROSITY



Topeka
Community
Foundation

2017 ANNUAL REPORT

2017

A YEAR OF

UNPRECEDENTED GROWTH

This was a year of unprecedented growth for the Topeka Community Foundation. And as our assets have grown, so has our desire and capacity to be a catalyst for positive change in the community.

We began the year with a fresh strategic plan and goals to widen our reach, improve value to our donors and elevate our leadership in the community. We're excited about our accomplishments in 2017 and our plans for continuing this important work in 2018.

The Growing Generosity campaign generated a great response as the community shared personal stories of philanthropy. These powerful testimonials sparked a plan to create video vignettes which will be released throughout 2018. Who better to tell about the Foundation's value than our donors?

Donor Connect events were introduced in 2017 in an effort to help educate donors about the impact charitable giving has in our community. We hosted events at Pine Ridge, the Topeka Zoo and the future home of the GraceMed health care safety net clinic.

Finally, becoming "home" to the St. Francis Foundation assets through the establishment of four funds here, gave us the perfect platform to build an initiative which will align our grantmaking and community leadership. We are bringing together more than 20 organizations in our community to discuss new and different ideas to improve our community's health. Our goal is to provide leadership, coordination and in some cases, funding as organizations work to improve our community's health.

We are thankful for our donors and invite you to join us in our journey to grow generosity and make our community the best it can be. We are excited for what 2018 will bring and look forward to sharing our progress with you throughout the year.



Shelly Buhler

Shelly Buhler
Board Chair

Marsha Pope

Marsha Pope
President

FINANCIAL HIGHLIGHTS

HOW WE GREW

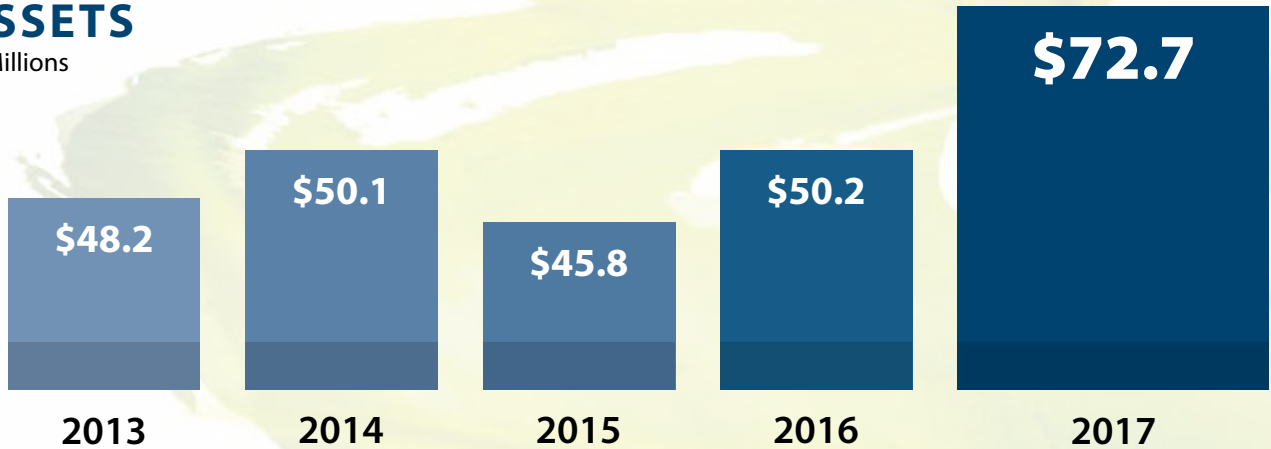
2017 INVESTMENT

PERFORMANCE

14.7%

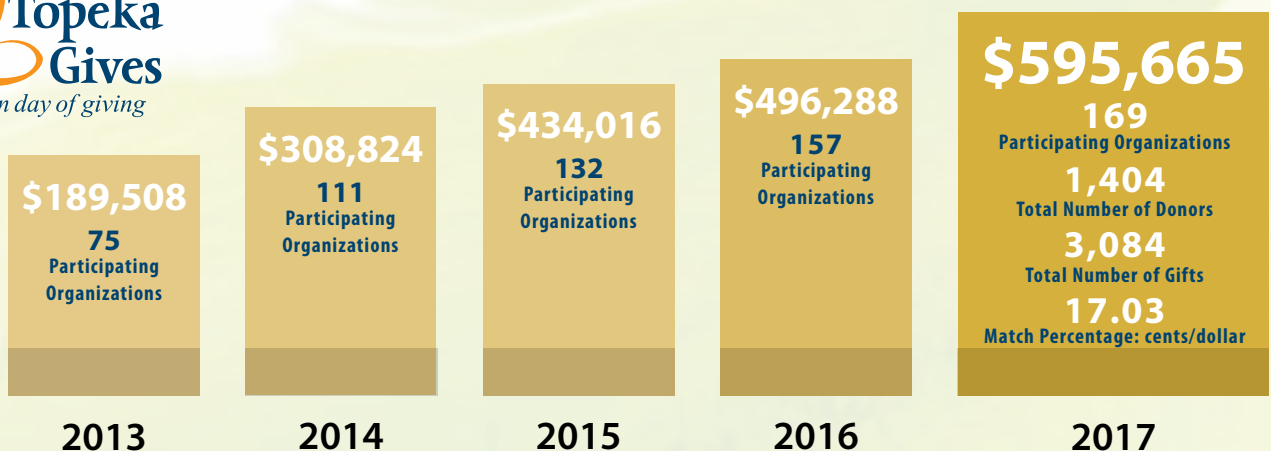
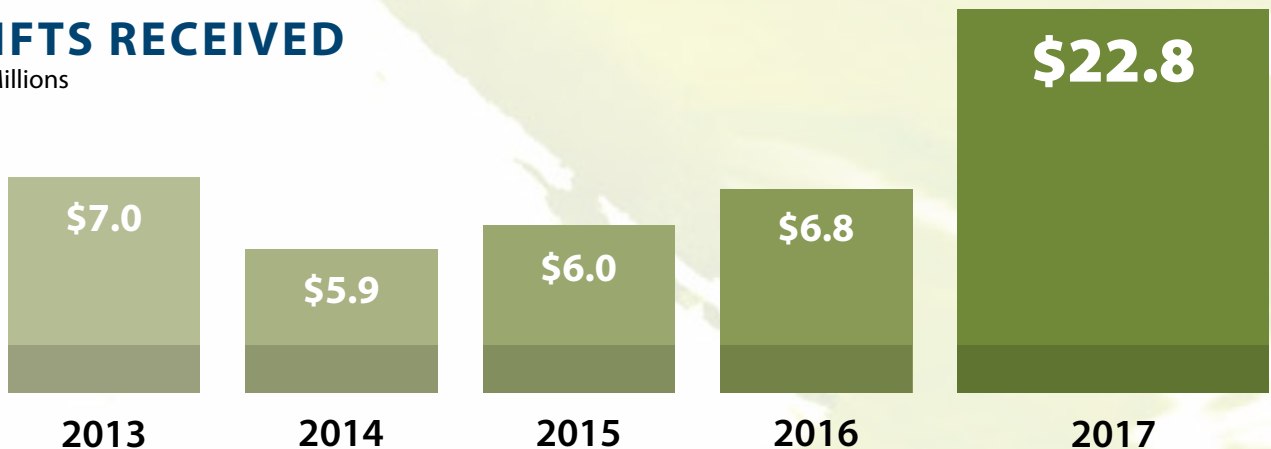
ASSETS

In Millions

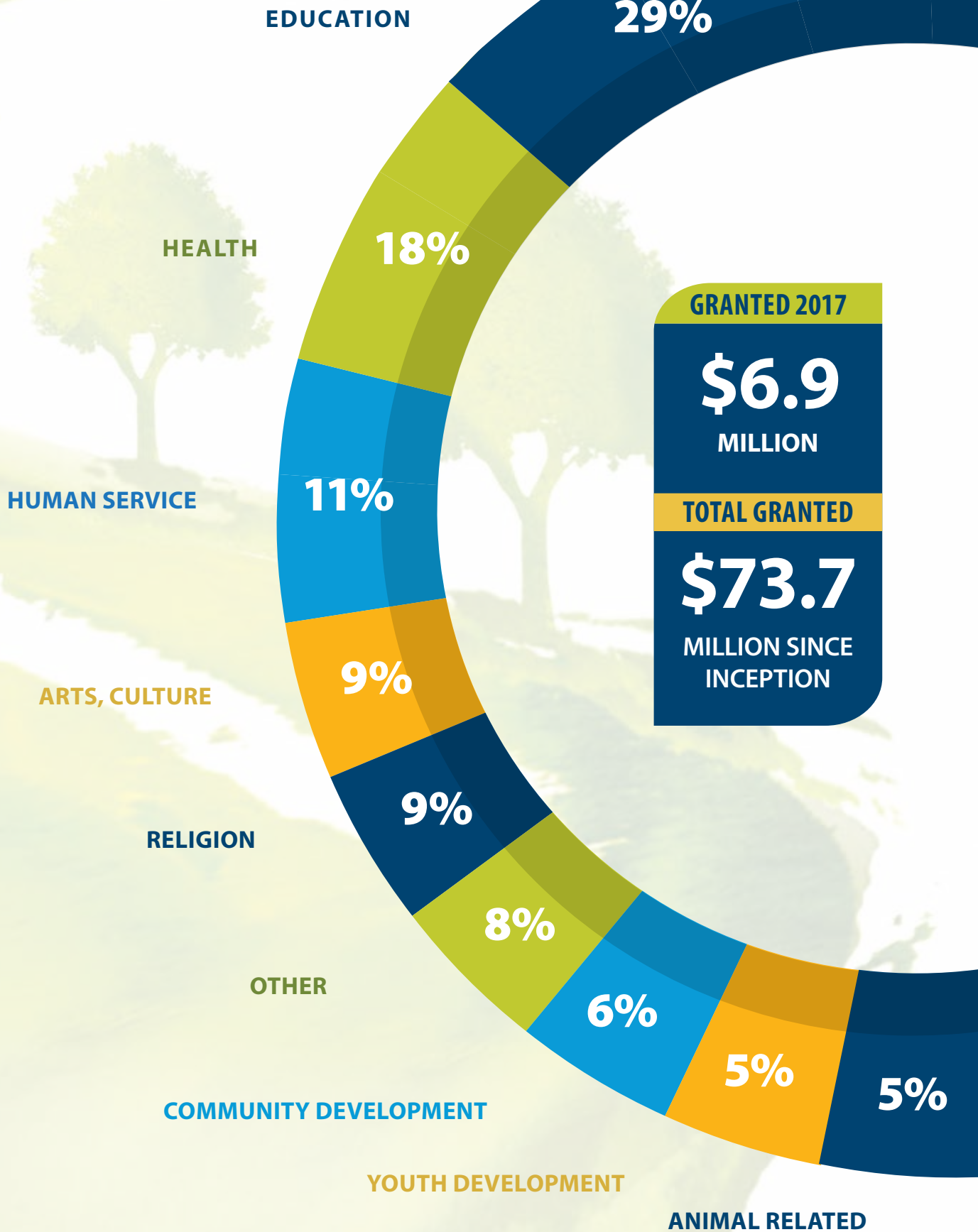


GIFTS RECEIVED

In Millions



GRANTS BY PROGRAM



TOPEKA COMMUNITY FOUNDATION

STATEMENT OF FINANCIAL POSITION AS OF DECEMBER 31, 2017
(Unaudited)

ASSETS

Cash and Cash Equivalents	\$ 1,479,250
Investments	70,610,952
Beneficial Interest	384,366
Cash Surrender Value of Life Insurance	277,235
Office Equipment, net	<u>6,222</u>
<i>Total Assets</i>	<u><u>\$72,758,025</u></u>

LIABILITIES AND NET ASSETS

Liabilities	
Agency Funds (see supplemental information)	<u>\$20,545,734</u>
Total Liabilities	<u>20,545,734</u>
Net Assets	<u>52,212,291</u>
<i>Total Liabilities and Net Assets</i>	<u><u>\$72,758,025</u></u>

STATEMENT OF ACTIVITIES FOR THE 12 MONTHS ENDED DECEMBER 31, 2017

CONTRIBUTIONS AND REVENUES

Contributions	\$20,076,841
Administrative Fees, net	137,588
Interest and Dividends	31,062
Realized & Unrealized Gain on Investments	<u>4,922,118</u>
Total Contributions and Revenues	<u>25,167,609</u>

EXPENSES

Initiatives/Grants/Transfers	5,234,036
Administrative Expenses	509,320
Direct Fund Expenses	<u>575,208</u>
Total Expenses	<u>6,318,564</u>

Contributions and Revenues in Excess of Expenses 18,849,045

Net Assets, beginning of year 33,363,246

Net Assets, end of year \$52,212,291

SUPPLEMENTAL INFORMATION

AGENCY FUNDS

Agency Funds, beginning of year	\$16,848,943
Contributions	2,691,222
Net Investment Income	2,319,995
Distributions	(884,722)
Expense Allocation for Administration	(137,588)
Classification Changes and Transfers	<u>(292,116)</u>
<i>Agency Funds, end of year</i>	<u><u>\$20,545,734</u></u>

Audited financial statements are available upon request from the Topeka Community Foundation

BOARD OF DIRECTORS

Chris McGee – Chair
Pam Alexander – Vice Chair

Dr. Tiffany Anderson
Steve Briman
Shelly Buhler
Tara Dimick
Arnold Downing, Sr.
Barry Feaker
Leah Gabler-Marshall
Brett Klausman
Sarah Lucero
Brad Owen
Randy Peterson
Cheryl Rios
Curtis Sneden
Doug Sterbenz
Julie Swift, DDS, MS

RETIRING BOARD MEMBERS

Rick Jackson
Nancy Lewis
Grace Morrison, MD

STAFF

Marsha Pope, *President*
Kathy Smith, *Director of Community Investment*
Kris Scothorn, *Director of Finance*
Shelley Matalone, *Administrative and Donor Services Assistant*

GROW WITH US

We invite you to be actively connected to your community and its needs through the Topeka Community Foundation.

MISSION STATEMENT:

Encourage philanthropy by providing leadership on key community issues, by connecting donors with their interests and community needs, and by ensuring accountability for effective investment of donor dollars.

Find us on 

Topeka Community Foundation



Follow us on Twitter @TopekaCF



Instagram: Topeka_CF



Send an email:

pope@topekacommunityfoundation.org
smith@topekacommunityfoundation.org
scothorn@topekacommunityfoundation.org
matalone@topekacommunityfoundation.org



Call: 785-272-4804
Fax: 785-272-4644



Write to us:
5431 SW 29th Street, Suite 300
Topeka, KS 66614

VISIT OUR WEBSITE

www.topekacommunityfoundation.org



Confirmed in Compliance
with National Standards for
U.S. Community Foundations